

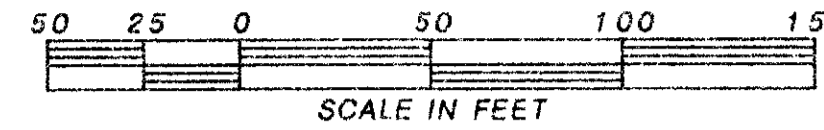
THE GREENS AT BOCA GOLF & TENNIS CLUB

PALM AIRE EAST P.U.D.

A PLAT OF A PORTION OF SECTION 31, TOWNSHIP 46 SOUTH, RANGE 43 EAST
PALM BEACH COUNTY, FLORIDA.

WINNINGHAM & LIVELY, INC. SURVEYORS - ENGINEERS FORT LAUDERDALE, FLORIDA

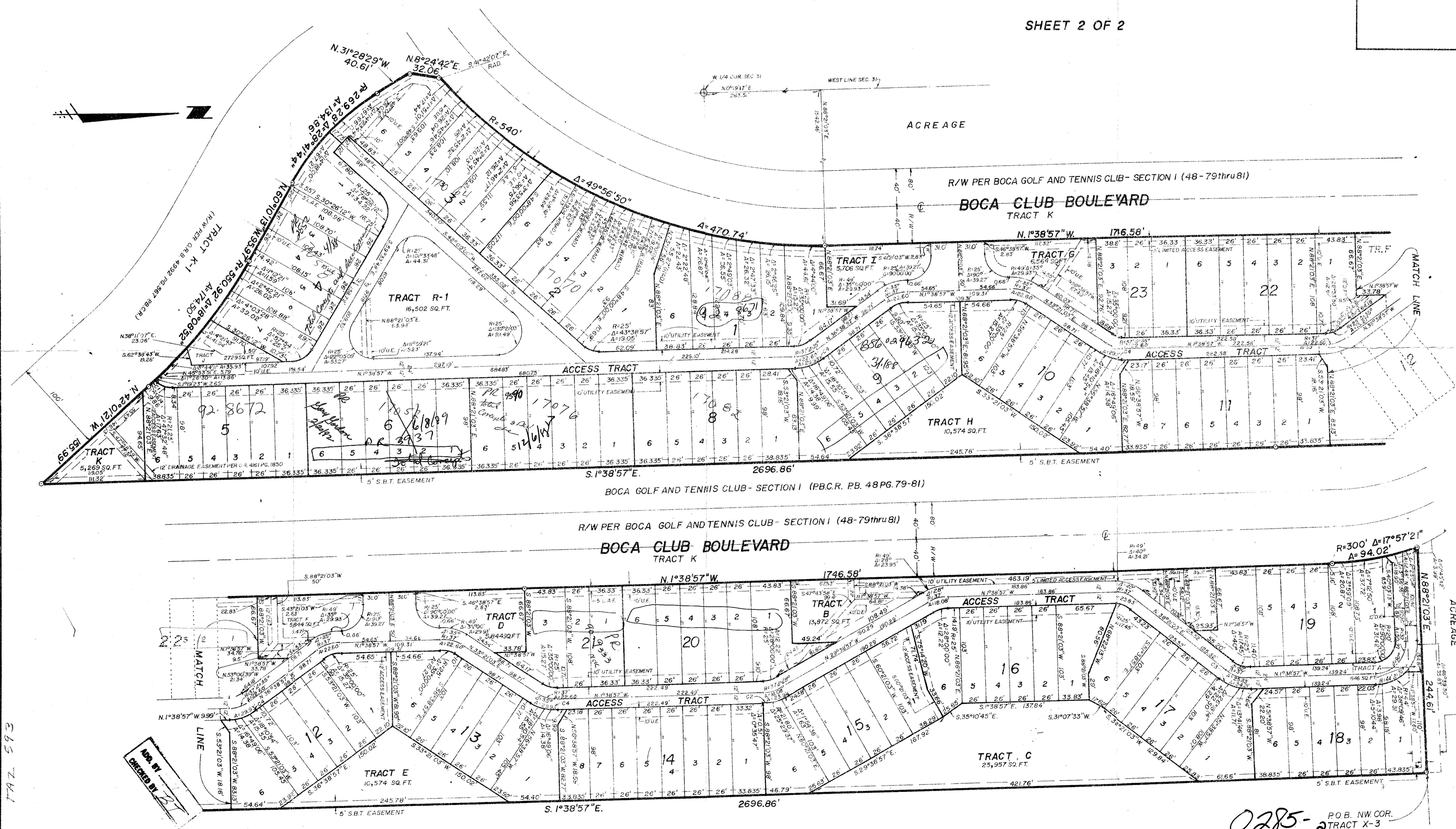
SCALE: 1" = 50'



OCT. 1986.

CURVE	RADIUS	DELTA	LENGTH
C1	550.92	0°38'18"	6.14'
C2	49.0	28°00'	23.94'
C3	49.0	40°00'	34.21'
C4	49.0	35°00'	22.93'

SHEET 2 OF 2



31/46/43
Subdivision # The Greens at Boca Golf & Tennis Club
BOOK 57 FLOOD ZONE ATELIA PLAT 2013
QUAD # 22
SECTION 33431
P.U.D. NAME Palm Aire East P.U.D.
TAX 593

NOT BY CHECKED BY

BOCA GOLF AND TENNIS CLUB - SECTION I (P.B.C.R. PB. 48 PG. 79-81)

THE GREENS AT BOCA GOLF & TENNIS CLUB 57/31

0285-008 P.O.B. NW COR. TRACT X-3

30' NON-EXCLUSIVE GRASS COURSE ACCESS EASEMENT PER S.F. 485-0360